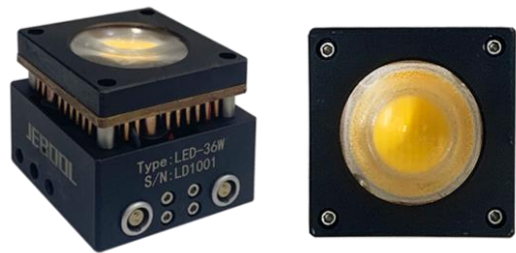


LED Light LED-36W

- Suitable for high-speed camera fill light, no flicker;
- Anti-Shock design;
- Support daisy chain and star connection;
- Luminous flux>6000lm;
- Illumination>14000lx @0.5m direct.

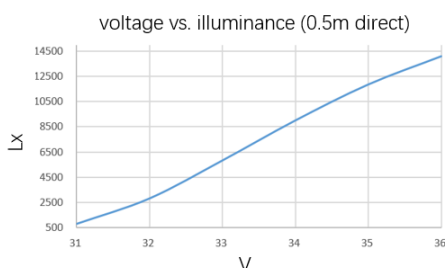
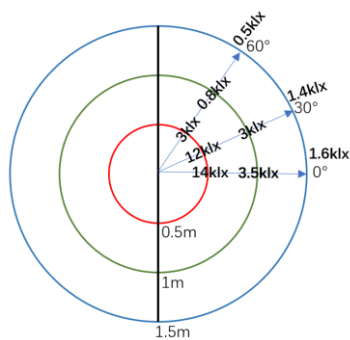


Onboard LED light LED-36W, using high-power LED matrix lamp, get very high conversion efficiency from current to luminous flux. The LED matrix is directly installed on the copper pillar radiator, and the high-speed fan is added to achieve a good heat dissipation effect.

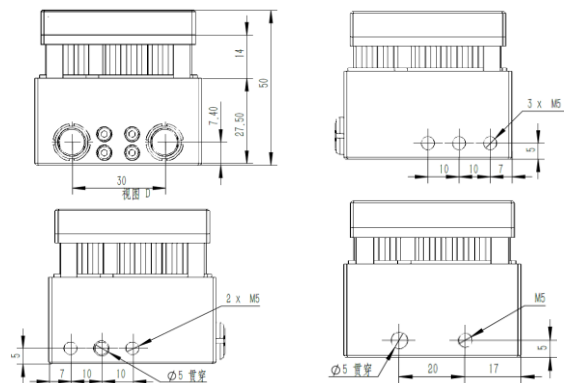
Specification (@25℃):

Name	Unit	Value
Rated Power	W	36
Rated Voltage	V	36
Max. Power	W	50
Dimension	mm	54×54×50
Weight	g	105
Connector	2 个 LEMO EGG.0B.302	
Transfer Max. Current	A	5
Anti-Shock	g	>100
Opera. Temperature	℃	-40~50

Illumination distribution and “Lx vs. V”



Dimension:



Application example: it is Max. support 2lines×4 LED unit/line when JEBOOL battery BAT-36V is connected.



Connector Define (LEMO EGG.0B.302)

Pin 1	Power+
Pin 2	Power-